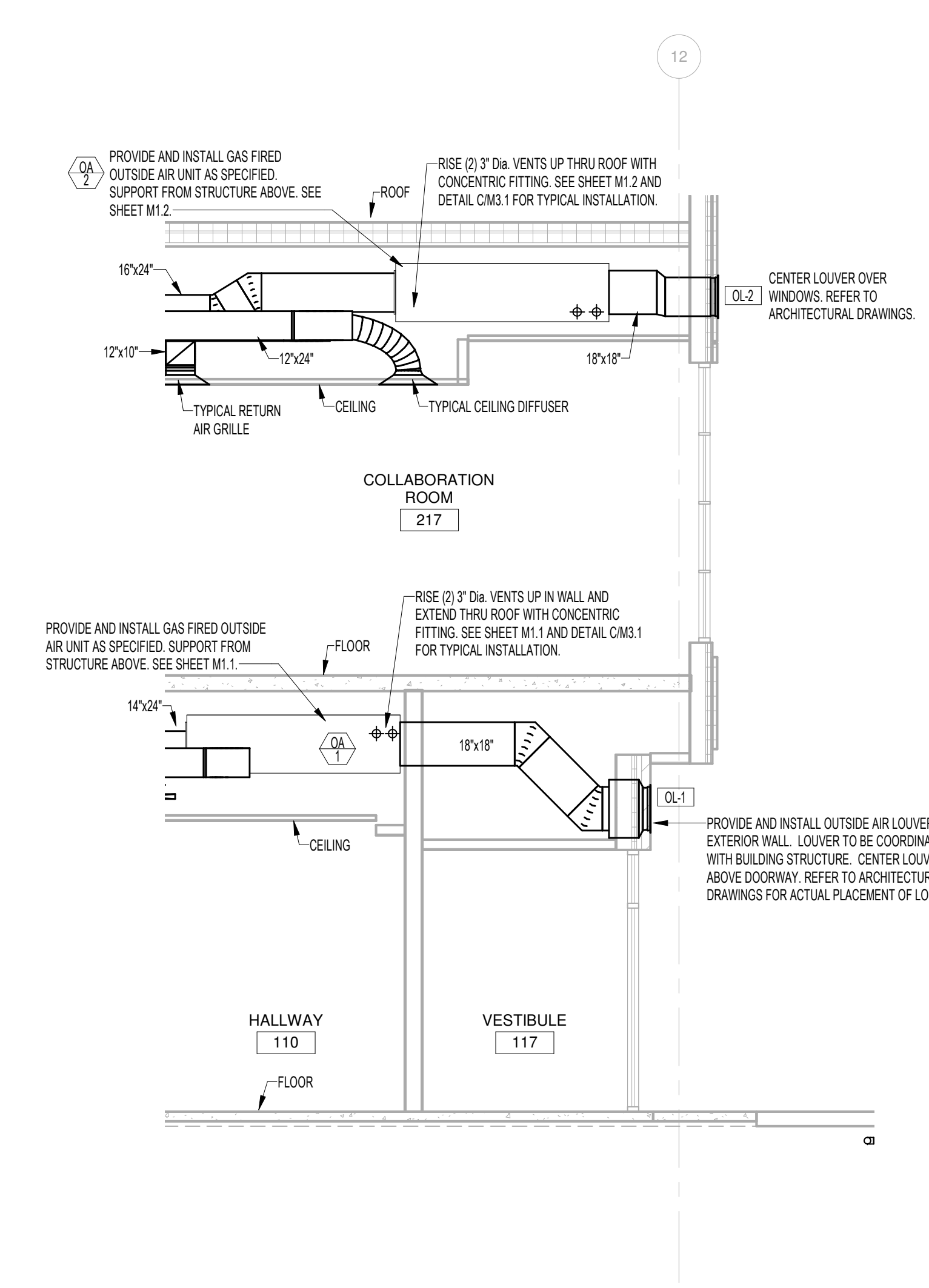
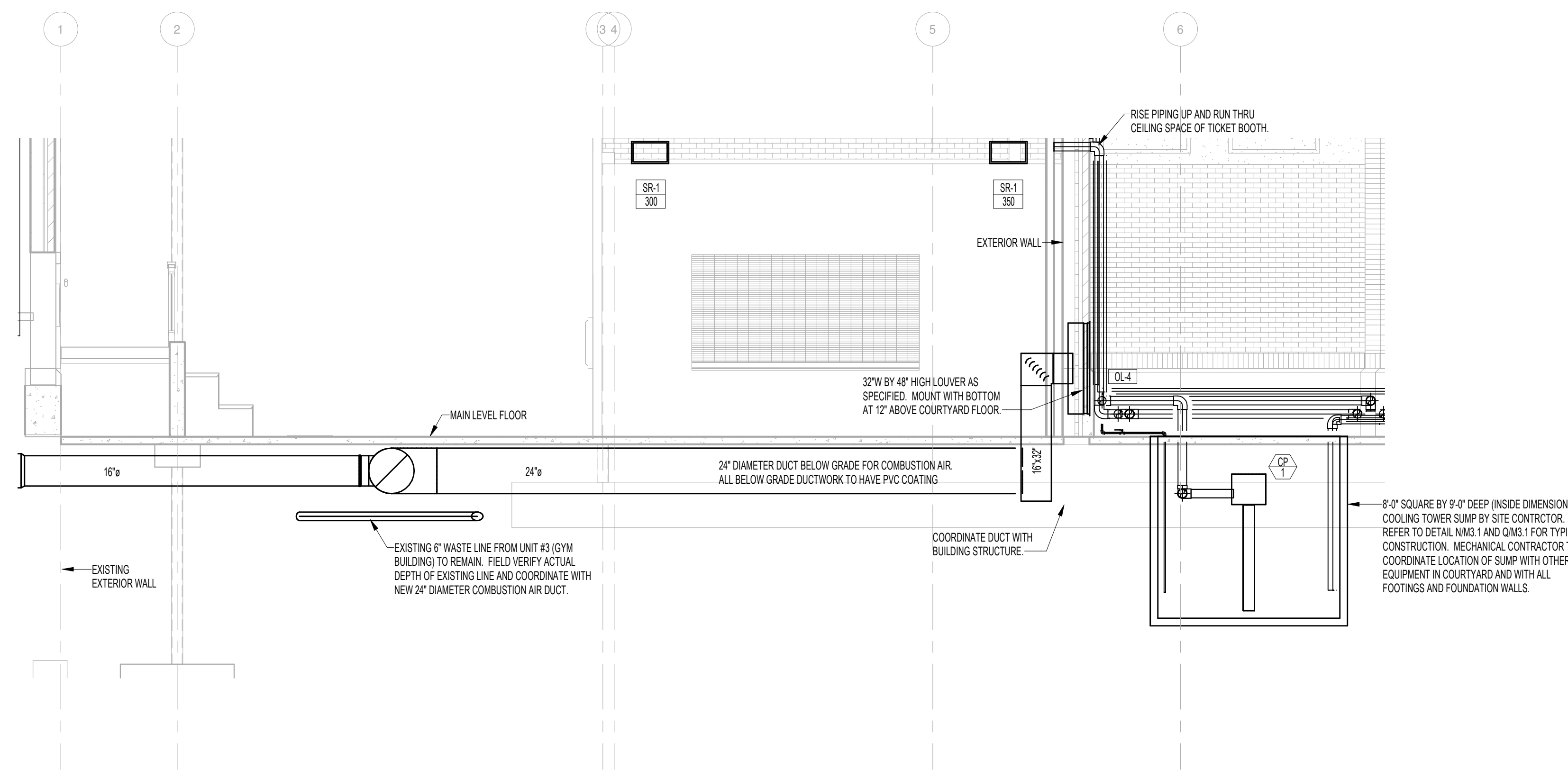


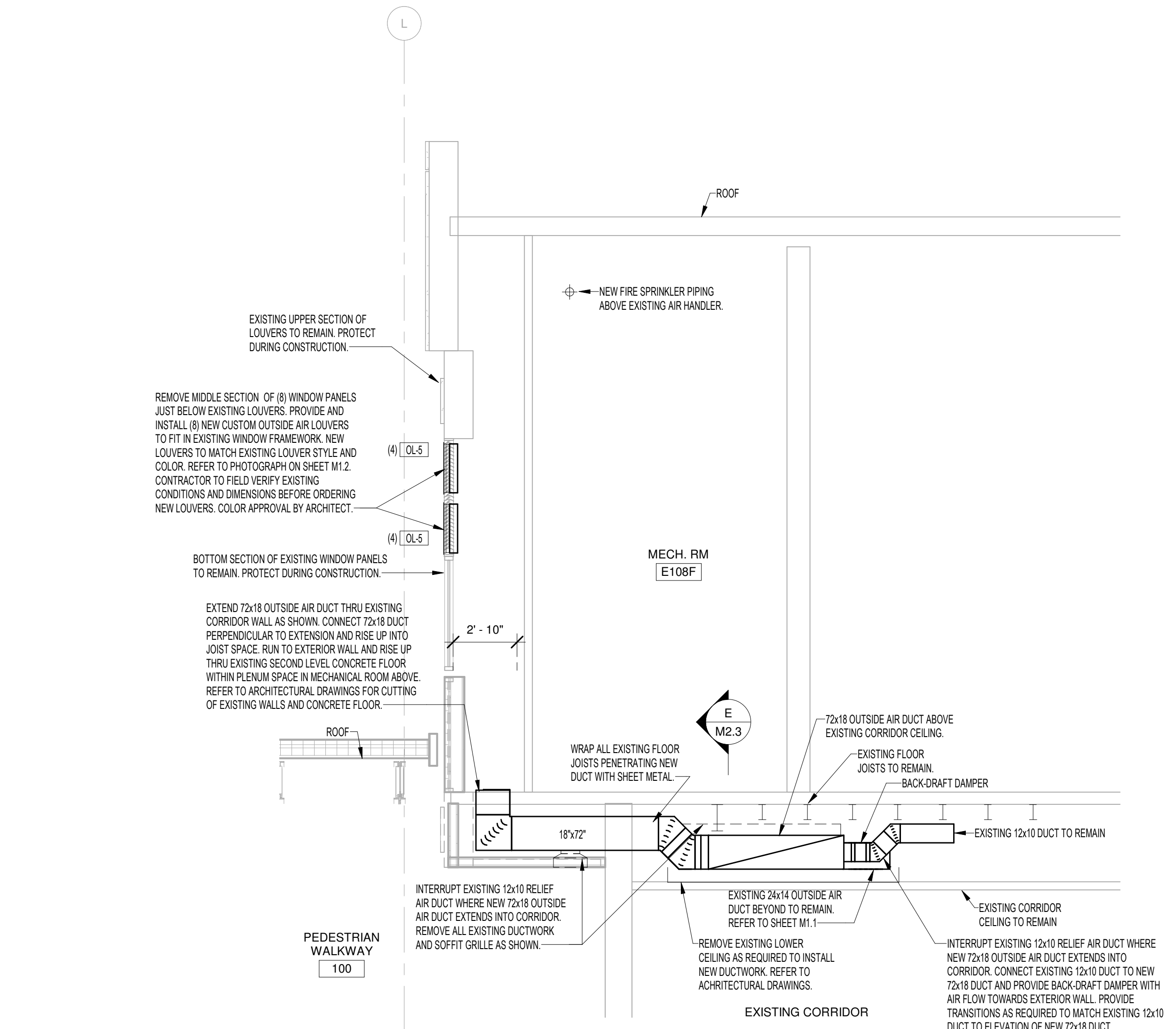
A
M2.2
MECHANICAL SECTION
SCALE: 1/4" = 1'-0"



B
M2.2
MECHANICAL SECTION
SCALE: 1/4" = 1'-0"



C
M2.2
MECHANICAL SECTION
SCALE: 1/4" = 1'-0"



D
M2.2
MECHANICAL SECTION
SCALE: 1/4" = 1'-0"

BID SET - 01/24/2020

HUMMEL
 a: 2785 North Bogus Basin Road
 Boise, Idaho 83702
 p: (208) 343.7523
 f: (208) 343.0940

Project:
**POCATELLO HIGH SCHOOL -
 ADDITION & RENO.**

325 N ARTHUR AVE
 POCATELLO, ID 83204

Sheet:
MECHANICAL SECTIONS

Revisions: Δ	
1	ADD 12x18 DUCT TO NEW CORRIDOR. CONNECT EXISTING 12x10 DUCT TO NEW 12x18 DUCT AND PROVIDE BACK-DRAFT DAMPER WITH AIR FLOW TOWARDS EXTERIOR WALL. PROVIDE TRANSITIONS AS REQUIRED TO MATCH EXISTING 12x10 DUCT TO ELEVATION OF NEW 12x18 DUCT.

Engineered Systems Associates
 1355 EAST CENTER
 POCATELLO, IDAHO 83201
 PHONE: (208) 233-0501
 FAX: (208) 233-0529
 EMAIL: esa@engsystems.com
 ESA JOB NUMBER: 18075

Project No: 18075
 Project Number: 18075
 Drawn By: M Jensen
 Checked By: D Sudweeks
 Date: 01/24/2020

Sheet No: **M2.2**